

**VOLUME 3, ISSUE 3
SEPTEMBER 2002**

WHITE CATTLE JOURNAL



**AMERICAN BRITISH WHITE PARK
ASSOCIATION**

President's Message

The summer county fairs are now in the history books. Rachel Anderson took breeding stock honors at her local fair. She is the daughter of Bonnie and Dan Anderson. For more details, contact proud grandpa Howard Bycroft. Not to be out done, the Sims girls Alisha & Krystal have the area talking about those White steers and how well they do in carcass competition. Lois & Paul Sims have all the details. Congratulations to all those that showed Whites again this year.

Just heard that White calves are topping the sale barn market in towns where they were once discounted for not being black. Paul Sims states that the calves and cows are selling for top money. This is something many of us have been working on for a long time. To make it work in your area, get a copy of our carcass data and spread it around.

Did you happen to read the July issue of the Drovers magazine. A regular columnist is Fred Knop and his article included some carcass data supplied to him by Kevin Wolf. Mr. Knop says "today's market increasingly demands cattle with high retail yield, high quality and moderately sized retail cuts". Sounds like a White cow to me. He goes on to say "I have presented them (White Park) to illustrate that there are small, muscular cows in this country that produce heavy, lean, well-marbled steers with big ribeyes and high ribeye ratios. The White Park breed may be just one of these breeds". This type of advertising comes at very little expense. Kevin took the time to contact Mr. Knop and give him our carcass data. For more details, read the July 2002 issue of the Drovers.

I have been getting reports that breeding stock sales are taking place early this year. One warning, don't keep every bull to sell as breeding stock. Back in the 1970's and 1980's when bull demand was very high, some breeders forgot to cut those bottom end bulls. It has taken the breed 20 years to change the perception of our cattle. Let's do the right thing and cut those bottom end bulls. Keep only the best and you will sell breeding stock for many years to come to happy customers. Sell less than top quality and you will not have repeat sales.

Again this year we will be represented at the World Beef Expo in Milwaukee at the end of September. The next week the east coast place to be will be Harrisburg, Pennsylvania. Our national show takes place and will be held in conjunction with our Annual Membership meeting.

I hope to see you at one of these shows. It definitely helps promote our breed of cattle.

Larry Fedler
President, ABWPA

BOARD OF DIRECTORS

2001 - 2002

Larry Fedler, President
2173 170th St
West Point, IA 52656
319-837-6420
lpjwhite@interl.net
Term Expires: 2003

Howard Bycroft, Vice-President
778 80th Ave
Roseville, IL 61473
309-426-2619
hsbycrof@maplecity.com
Term Expires:2004

John Gempler, Secretary/Treasurer
129 Swiss Hill Road N.
Jeffersonville, NY 12748
845-482-5227
gempler@catskill.net
Term Expires:2003

Marie Allen
1781 90th Ave
St. Augustine, IL 61474
309-462-2406
Term Expires:2002

Doug Bledsoe
1309 Brushy Valley Dr.
Powell, TN 37849
865-938-3440
Term Expires:2004

Jay Johnson
94 W. Johnson Rd
Wheatland, WY 82201
307-322-5871
Term Expires:2002

Myron Lembke
HC 85 Box 76
Bridgeport, NE 69336
308-262-0561
Term Expires:2003

Glenn Wenger
PO Box 409
Myerstown, PA 17067
717-866-2130
gwenger@wengers.com
Term Expires:2004

Kevin Wolf
4717 Herleman
Quincy, IL 62301
217-224-4619
Term Expires:2002

OFFICE ADDRESS!!

AMERICAN BRITISH WHITE PARK ASSOCIATION

PO BOX 249
WHEELOCK, TX 77882

979-828-2339
208-979-9002 E-FAX
979-571-1294 CELL PHONE

Advertising Rates for “White Cattle Journal”

1 page\$70.00 single issue
Half page.....\$45.00 single issue
Quarter page.\$25.00 single issue
Classifieds....\$.50 per word w/\$15.00 min.

WEB SITE AD RATES!!

MOVE INTO THE NEXT STAGE OF ADVERTISING FOR YOUR OPERATION!

BUSINESS CARD - \$30.00 FOR 3 MONTHS

RANCH AD - \$60.00 FOR 3 MONTHS

CLASSIFIEDS - \$.50 PER WORD

(W/\$15.00 MIN PER MONTH)

ALL ADS MUST BE PREPAID

CALL FOR DISCOUNT RATES

UpComing Events

October 3rd— 7th, 2002

National American British White Park Show

Annual ABWPA Meeting and Banquet

Keystone International Show, Harrisburg, PA

October 31, 2002

Deadline for Ads to be published in the December 2002

"White Cattle Journal"

December 15, 2002

"White Cattle Journal" Published

February 15, 2003

Deadline for 2003 Membership Dues Renewed

For Members to be listed in the 2003 Directory

WOLF FARMS

Kevin Wolf
4717 Herleman
Quincy, IL 62301
217-224-4619
E-mail: wolffarm@adams.net



HOME OF
WOLF'S STRETCH 48
MB 88 EMPEROR 404
Quality Breeding Stock & Semen
For Sale

Semen Also Available at the following locations:

Genetics Horizons - Semex - Columbia, MO
(800)356-4565 or Madison, WI (800)347-4671

Universal Semen Sales - Great Falls, MT
(800)227-8774

Interglobe Genetics - Pontiac, IL
(815)844-3733

Wolf's Stretch 48 is CSS Certified
Also Qualified for Export to most
South American Countries.

Cattle Supply Products FOR SALE

Ear Tags - Blank (LG)packages of 25 tags and buttons.....\$21.50

Ear Tags - Blank(MED) packages of 25 tags and buttons.....\$19.00

Large ear tags available in Yellow, Orange & White

Medium ear tags available in White

Marking Pen -

.....\$3.75

Applicator

Gun.....\$18.00

SparePins(pkg2).....\$3.20

Spare Buttons(ear tag studs).....\$9.00

ABWPA Office Services

Business cards

2002 Adams County Fair Results



2002 Adams County Fair Results



Adams County Fair Results

Quincy, IL

ABWP Show July 25 - 28, 2002

Bull Calves born after January 1, 2002

1. Kevin Wolf, Quincy, IL

Junior Bull Calves calved between September 1, 2001 and December 31, 2001

No Entries

Yearling Bulls calved between May 1, 2001 and August 31, 2001

1. Slater Farms, Dave Slater, Jeffersonville, NY

2. Kevin Wolf, Quincy, IL

Senior Yearling Bulls calved between December 1, 2000 and April 30, 2001

1. Gempler Farm, John Gempler, Jeffersonville, NY

2. Kevin Wolf, Quincy, IL

Pair of Bulls Owned by Exhibitor

1. Kevin Wolf, Quincy, IL

Champion Bull

Slaterock's Lobo - Owned by Slater Farm, Dave Slater, Jeffersonville, NY

Reserve Champion Bull

John Boy's First - Owned by Gempler Farm, John Gempler, Jeffersonville, NY

Junior Heifers calved after January 1, 2002

1. Rebecca Wolf, Quincy, IL

2. Kevin Wolf, Quincy, IL

Senior Heifers calved between November 1, to December 31, 2001

1. Kevin Wolf, Quincy, IL

2. Kevin Wolf, Quincy, IL

Early Senior Heifers calved between September 1, and October 31, 2001

1. Wenger Farms, Glenn Wenger, Myerstown, PA

2. Wenger Farms, Glenn Wenger, Myerstown, PA

3. Twin Oaks Farm, Fred & Merrie Nimmer, Harry Nimmer, Matt Nimmer, Rockton, IL

Summer Yearling Heifers calved between July 1, and August 31, 2001

1. Twin Oaks Farm, Fred & Merrie Nimmer, Harry Nimmer, Matt Nimmer Rockton, IL

Spring Yearling Heifers calved between May 1 and June 30, 2001

1. Slater Farms, Dave Slater, Jeffersonville, NY

Late Junior Yearling Heifers calved between March 1 and April 30, 2001

1. Twin Oaks Farm, Fred & Merrie Nimmer, Harry Nimmer, Matt Nimmer Rockton, IL

2. Gempler Farm, John Gempler, Jeffersonville, NY

3. Kevin Wolf, Quincy, IL

4. Slater Farms, Dave Slater, Jeffersonville, NY

Junior Yearling Heifers calved between January 1 and February 28, 2001

1. Kevin Wolf, Quincy, IL

Senior Yearling Heifers calved between September 1 and December 31, 2000

1. Wenger Farms, Glenn Wenger, Myerstown, PA

Adams County Fair Results continued...

Two Heifers Owned by Exhibitor

- 1.Twin Oaks Farm, Fred & Merrie Nimmer, Harry Nimmer, Matt Nimmer, Rockton, IL
- 2.Twin Oaks Farm, Fred & Merrie Nimmer, Harry Nimmer, Matt Nimmer, Rockton, IL
- 3.Kevin Wolf, Quincy, IL
- 4.Wenger Farms, Glenn Wenger, Myerstown, PA

Cow/Calf

No Entries

Champion Heifer

B&B Laura 51L - Owned by Twin Oaks Farm, Fred & Merrie Nimmer, Harry Nimmer, Matt Nimmer, Rockton, IL

Reserve Champion Heifer

Nim's Fancy J - Owned by Twin Oaks Farm, Fred & Merrie Nimmer, Harry Nimmer, Matt Nimmer, Rockton, IL

Breeders Herd - 1 Bull and 3 Heifers any age

- 1.Kevin Wolf, Quincy, IL
- 2.Kevin Wolf, Quincy, IL

Get of Sire - 3 Head, any age, both sexes from above classes by one sire owned by exhibitor

- 1.Twin Oaks Farm, Fred & Merrie Nimmer, Harry Nimmer, Matt Nimmer, Rockton, IL
- 2.Wenger Farms, Glenn Wenger, Myerstown, PA
- 3.Kevin Wolf, Quincy, IL

Pair of Calves calved after September 1, 2001 - Both Sexes

- 1.Kevin Wolf, Quincy, IL

Pair of Yearlings - Both sexes any age

- 1.Slater Farms, Dave Slater, Jeffersonville, NY
- 2.Kevin Wolf, Quincy, IL

Best Six Head Owned by Exhibitor

- 1.Kevin Wolf, Quincy, IL

Junior Show Participants

Congratulations to Rebecca Wolf and Johanna Morehouse for participating in the 2002 Adams County Fair Junior Show. Good Job and we look forward to seeing you down the road.

Junior Purchases Reserve Champion Bull

Congratulations to Bradley Foster who purchased John Boy's First - Reserve Champion bull at the Adams County Fair 2002. John Boy's First is sired by Bledsoe's John Boy and out of a LPJ 31 cow. Bradley was unable to attend the Adams County show but the bull was well represented by former owner John Gempler and Dave Slater.

Progeny repeats Championship

Slaterock's Lobo, Grand Champion bull who is sired by LPJ Jackpot (Reserve Champion - 2001 Keystone International Livestock Expo) and out of a Wells 416 cow. Lobo is a maternal brother to the 2001 Grand Champion Female at Adams County Fair in 2001. Lobo has the Champion bloodlines to back his looks. Watch for him in the breeding pastures.

Breeders of Quality American British White Park

Gempler Farm

John Gempler
129 Swiss Hill Road N.
Jeffersonville, NY 12748

Home: 845-482-5227
Office: 845-482-5522

Slater Farms

Dave Slater
191 Old Taylor Road
Jeffersonville, NY 12748

Home: 845-482-3667
Office: 914-797-6784



Gempler Farm: gempler@catskill.net
Slater Farm: dslater@catskill.net
Web: www.g-swhitepark.com

Bledsoe White Park Cattle
Breeding Age Bulls
For Sale!!



Doug & Johnnie Bledsoe
1309 Brushyvalley Dr.
Powell, TN 37849
865-938-3440

"Members Since 1992"

American British White Park Association

"United American White Park & British White Breeders"

Notice
Membership Listed on Website

If anyone does not want their Name, address and phone number listed on the web site please send written notification to the ABWPA office at PO Box 249, Wheelock, TX 77882. If we do not have written notification your information will be listed on the web site for our interested breeders to locate someone in their area easier.



WENGER FARMS

Registered American British White Park Cattle

**SEMEN AVAILABLE FROM
2 GREAT BULLS**

PRICE \$15



#F10376 Mytown Frank
Calved May 12, 1996

Sire: Y9437 Hiels Avon Yoland
Dam: Drumlins Eleanor

Sire of:

2000 National Grand Champion Female
2001 National Reserve Champion Female
2000 Club Calf Champion (all breeds)
Keystone International Livestock Expo.
Grand Sire of 'Mytown Kicker'

Calves Average Birthweight 78 Pounds



#11503 Mytown Kicker
Calved April 6, 2000

Sire: #11120 Mytown Hobie
Dam: #11116 Mytown Hiawatha

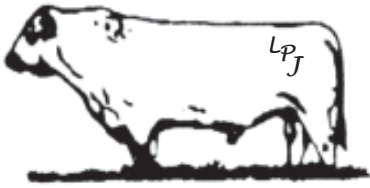
Show Credits:

2000 Reserve Champion Bull - Keystone
International Livestock Exposition
2001 Champion Bull - Quincy, Illinois
2001 Reserve Champion Bull -
World Beef Expo
2000 First Place Bull Calf - North American
International Livestock Exposition

GLENN T. WENGER, Manager **BILL PAUL, Herdsman**

831 South College Street • P.O. Box 409
Myerstown, PA 17067 • 717-866-8400

Evening Phone 717-866-7646 till 9:00 PM Eastern Time
gwenger@wengers.com • www.wengers.com



Larry Fedler, Owner

LPJ

American British White Park Association

member since 1983

**SEMEN
YEARLINGS, 2-YEAR OLD BULLS
FEMALES
FOR SALE!!!**

319-837-6420

E-mail: lpjwhite@interl.net

2173 - 170th St

West Point, IA 52656

ARROWHEAD WHITES

**Herd Reduction
For Sale Private Treaty**

**Cow /Calf Pairs
Bred Cows
Bred Heifers
Open Heifers**

Semen & Bulls

Howard & Susan Bycroft
(309) 426-2619

**778 80th Avenue
Roseville, IL 61473**

Dan & Bonnie Anderson
(309) 426 - 2815

**REQUEST FOR INFORMATION ON
CATTLE PRO 2002 OR ORDER YOUR
BEEF CATTLE MANAGEMENT PROGRAM**

"The official Program of the ABWPA"

can be directed to

SHERRY PARKS at 979-828-2339, 208-979-9002 FAX

E-MAIL - sherry@gspcattleco.com.

Member Profiles

I would like to invite everyone to send into the office a short paragraph about their White Cattle operation. Each month a member will be featured on the Web Site. The member will be chosen by a Lottory drawing on the 15th of each month and the Member Profile will be posted at the beginning of the next month.

**Send your profiles to the
ABWPA Office at
PO Box 249, Wheelock, TX 77882.**

White Park Steer Show's to continued Success....

Kevin Wolf has sold a number of youngsters steer prospects over the years. This year is no different, Kevin sold Neil Deege a purebred white park steer to go along with his black angus and red angus steers that he and his brother Justin owned. Neil and Justin traveled to many county fairs with all of their steers. Time and again the white park steer would place above the angus steers and even at 1 fair the white park steer was the only animal in the Deege string to place. The white park steer seemed to be the thickest and most red meat steer in the class. Congratulations Neil on a job well done.



GSP Cattle Co

Greg & Sherry Parks

We are distributors for the a number of cattle related products.
Give us a call for pricings on the following products.

PO Box 249
Wheelock, TX 77882

979-828-2339
208-979-9002 Fax

Email: sherry@gspcattleco.com
www.gspcattleco.com

CATTLEPRO™

CattlePro 2002

Beef Cattle Records, Management and Performance Analysis
Software Developed by Cattlemen for Cattlemen

PERMA-FLEX™ EARTAGS

Perma-Flex tags for cattle, sheep and hogs.
Applicators, Markers and cattle prods.



World Leaders in Weighing
For all of your electronic weigh systems.
TruTest is compatible with CattlePro herd
management software.



For all of your electric fencing needs in one place.
Energizers (battery or solar), wire, tape, crimpers, and much more.

We also provide Graphic Design work for Cattle Sale Catalogs and Ranch
Web Sites. If you are wanting to move into the age of cyber space and
would like to register a domain name or need Web Site Hosting or Web
Site Design give us a call. Our 1st background is cattle.

Efficiency is the BOTTOM LINE

**1st Annual White Park Feeder Calf Sale
December 7, 2002
Farmers Livestock Auction Barn
Coatsberg, IL**

The first annual White Park Feeder Calf Sale is to be held December 7th, 2002 at the Farmers Livestock Auction Barn in Coatsberg, IL. This sale will be held in conjunction with their regular sale. Kevin Wolf has worked hard to help promote the white park cattle and continues to raise quality cattle. This sale is to help his customers and other small white park breeders who sell feeder calves, to realize more of a return for their product. Over the years Kevin has sold a number of white park calves to feedlots that know the qualities of the white park and would like to feed more of the cattle. Kevin is trying to group together a quality set of white park calves for the feedlot buyers to choose from. As an incentive Kevin is offering \$5.00 per head for individual carcass data returned to him on all of the calves purchased through this sale.

If you are interested in purchasing calves or have calves to sell give Kevin Wolf a call at 217-224-4619 or Email him at wolffarm@adams.net or give the Auction Barn a call at 217-455-2505 be sure to mention the White Park Feeder Calf Sale.

**Winnebago County Fair
Pecatonica, IL
Results**

Congratulations Matt Nimmer on a job well done. Matt received Grand Champion Heifer - Other Breeds in the Open Show and Reserve Grand Champion - Other Breeds in the 4-H Show with Nim's Fancy J at the Winnebago County Fair in Pecatonica, IL. Matt is the son of proud parents Fred & Merrie Nimmer of Rockton, IL

What is an Expected Progeny Difference ?

Dr. John Hough

The concept of EPD's was first introduced to Polled Hereford producers over 10 years ago with the first publication of a National Sire Evaluation. An Expected Progeny Difference (EPD) is an estimate of the genetic merit of an animal as a parent and is reported in the normal units of measurement such as pounds or centimeters. Nearly every major beef breed association in the United States publishes an annual or semi-annual summary of sire EPD's. The APHA conducts semi-annual genetic evaluations and publishes an annual sire summary for birth weight, weaning weight, yearling weight, maternal milk, maternal weaning weight and scrotal circumference.

An EPD means absolutely nothing by itself, and it does not predict specific levels of performance. An EPD should only be used to make comparisons between individuals. For example, let's say a sire has a weaning weight EPD of +15 lb. This does not indicate that you would increase weaning weight in your herd by 15 lb if you were to use this sire, nor does it mean his progeny will weigh any certain amount at weaning. One individual EPD means nothing until you have another EPD to compare it with.

Consider another example. Sire A has a birth weight EPD of -3 lb and Sire B's birth weight EPD is +1 lb. When used in your herd, you would expect Sire B's calves to weigh 4 lb (1 lb minus -3 lb) more than A's calves, if mated to a comparable group of cows. This 4-lb difference is also only an average value. If you had one calf by each sire, these two calves would probably not be exactly 4 lb different at birth. As you increase the number of calves in your herd by each of these two sires though, the average birth weight difference between the two sire groups should come closer to 4 lb. In addition to birth weight, similar examples could be given for weaning weight, yearling weight and scrotal circumference. These four EPDs are termed "direct" EPDs and pertain to a parent's own progeny.

Another category of EPDs, termed "maternal", includes Maternal Milk EPD. Maternal Milk EPDs pertain to a sire's daughters calves or in other words a sire's maternal grand progeny. A Maternal Milk EPD predicts the difference in average weaning weight of sires' daughters' progeny due strictly to milking ability. Maternal Milk EPDs are expressed in pounds of calf weaned due to milk production, not actual pound of milk produced by the dam. For example sire A has a Maternal Milk EPD of 2 lb and sire B has a Maternal Milk EPD of 14 lb. Daughters of sire B should produce

continued on next page.....

What is an Expected Progeny Difference ?

progeny with 12-lb (14 lb minus 2 lb) heavier weaning weights than daughters of sire A. This 12-lb difference would be due to total milk production over the entire lactation period of approximately 205 days.

A calf's weaning weight is genetically influenced by his own genes for growth (half of these genes come from each parent) along with his dam's milk production. Weaning Weight EPDs are an indication of the calf's genes for growth, while Maternal Milk EPDs are an indication of the dam's milk production. Because of the direct and maternal genetics that influence a calf's weaning weight, a final type of EPD is published in the Polled Hereford Sire Summary. This is termed Maternal Weaning Weight EPD.

Maternal Weaning Weight EPD reflects both a sire's influence for direct genetics for a calf's growth and the maternal genetics for his daughters milk production. Maternal Weaning Weight EPD is simply a mathematical combination of Weaning Weight EPD and Maternal Milk EPD. $\text{Maternal Weaning Weight EPD} = (1/2 \times \text{Weaning Weight EPD}) + (\text{Maternal Milk EPD})$. A sire transmits one-half his genes for weaning weight to his daughters, the daughters in turn transmit one-half of these genes for weaning weight to their offspring, thus a sire's grand progeny actually receive 1/2 of a sire's Weaning Weight EPD. A sire's entire Maternal Milk EPD is an indication of his daughter's milk production.

As an example, say sire A has a Maternal Weaning Weight EPD of 30 lb and sire B's Maternal Weaning Weight EPD is 5 lb. You would expect weaning weights of daughters calves to be 25 lb (30 lb minus 5 lb) heavier for sire A. Again this is a result of direct genetics for a calf's weaning growth and the genetics for the dam's milk production. Maternal Weaning Weight EPD is sometimes referred to as "combined maternal", "growth plus milk" or "total maternal" EPD.

Expected Progeny Differences should never be compared across breeds. All national evaluations are always conducted within breed, therefore the values from these evaluations are relative to cattle within that breed only. A Polled Hereford, a horned Hereford and a Simmental sire may all have equal yearling weight EPDs of 20 lb, but you can not expect all three sires to be genetically equal for yearling weight. You simply can not and should not make any genetic comparisons between breeds based on EPD's.

This does not mean you must have one pure-breed of cattle to utilize EPD's. When making sire selections, commercial cattle producers actually have as much to gain from utilizing EPD information as purebred producers. Sires must be within the same breed to compare EPD's, but

continued on next page.....

What is an Expected Progeny Difference ?

these values are applicable when sires are mated to cows of a different breed or even crossbred cows.

There is, although, currently a research project being conducted by the University of Georgia examining the feasibility of combining the American Polled Hereford Association, American Hereford Association and Canadian Hereford Association data for a gigantic combined genetic evaluation. Many Polled Hereford breeders are anxiously awaiting the results of this research project.

One great advantage of Polled Hereford Sire Summary is that EPDs of all proven active sires are published. There is not a perfect bull for all to utilize. One bull may work best in one situation, while completely different bull will work better in another situation. Consequently in the Polled Hereford Sire Summary, there is an entire range between high and low EPD's for each trait. Therefore, there are probably many sires available that are suitable for nearly every production system.

Dr. John Hough author

Notes from Sherry.....

Hello to everyone. As the fall season is upon us I know everyone is getting geared up for the calving season and for the cold and snow to start flying. We have been busy in the office this summer with the many new members and new registrations. This has continued to be a busy year. Congratulations to all of this juniors participating in the local shows. If you were not in this issue of the journal and showed a white park at your county fair please send me a note with a short write up and I will try my best to work it into the next journal.

I am still wanting Member/Breeder profiles. I know it is really hard to talk about yourself but I know from visiting with many of you that you are really proud of the white park cattle you have and enjoy talking cows so Send me some of that information and maybe I can get you in contact with more Park Breeders that have your same interests.

Don't forget the next issue of the Journal will be published by December 15th so if you are wishing to send out Christmas messages or would like to run an ad in that issue we have extended the **deadline to November 25th** you can E-mail me or fax me your information but if it requires a photo then just overnight it to me.

Watch for your membership renewals in December also so that you can get your name listed in the 2003 Membership Directory.

Sherry Parks
ABWPA Executive Secretary

WELCOME NEW MEMBERS!!!

Patty Boone & John
Williamson
522 Knox Rd 400 N
Abingdon, IL 61410

Junior Member
Johanna Morehouse
676 N CR 1800
Basco, IL 62313

Dorsey Grice
PO Box 8436
Bowling Green, KY 42101

Bruce Welch
1285 Brookside Dr
Joplin, MO 64804

Junior Member
Rebecca Jean Wolf
4717 Herleman Rd
Quincy, IL 62305

WELCOME NEW MEMBERS!!!

Tape Measurement Conversion Chart

Birth Weights

25"	55.5lbs	29"	73.5lbs	33"	92.5lbs
26"	60lbs	30"	78lbs	34"	96lbs
27"	64.5lbs	31"	83.5lbs	35"	101lbs
28"	69lbs	32"	87lbs	36"	105.5lbs
		37"	110lbs		
		38"	Get a New Bull.		

***Please keep in mind use a regular tape measure and measure snugly around the heart girth of a newborn calf. (Average sized calves)

ATTENTION!!!!!!

IF YOU HAVE ANIMALS FOR SALE PLEASE SEND A LISTING TO THE OFFICE. WE HAVE INTERESTED PERSONS AND NEW BREEDERS CALLING FROM TIME TO TIME LOOKING FOR PEOPLE SELLING BREEDING STOCK AND EVEN FEEDER CALVES.

AMERICAN BRITISH WHITE PARK ASSOCIATION

PO BOX 249

WHEELOCK, TX 77882

979-828-2339

www.whitecattle.org

Email: office@whitecattle.org

